

Sentry Complete 2-Door Kit

The **Sentry Complete 2-door kit** is composed of one cabinet mounted controller (with power supply), two proximity card readers, 50 cards and necessary software. This kit is designed to provide an extremely cost effective, complete, easy-to-manage solution for one or 2 doors, with the ability to seamlessly expand up to 512 doors.

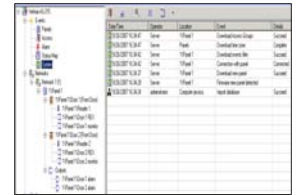
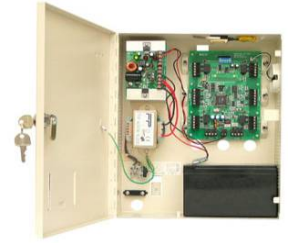
Components of the Sentry Complete 2-door kit:

The **Sentry Controller** in the kit is ideal for applications of up to 5,000 users. It offers the simplicity to satisfy basic access needs combined with state-of-the-art technology and the most widely used features in access control today. Each controller supports two readers, and is ready for installation in a mountable & lockable metal enclosure including transformer, power supply/charger and sounder.

The **Sentry software** is easy-to-learn, simple-to-use, offers fast installation and a powerful set of features including intelligent addressing and configuration.

Included in the kit are two compact, mullion mountable, waterproof **Sentry Proximity Readers** featuring Wiegand 26 bit compatibility, LED's and Integral Sounder.

50 durable **Sentry Proximity Cards** are standard in every kit.



Features of the Sentry Complete 2-Door Kit	Features of the Sentry Controller
<ul style="list-style-type: none"> • Low cost- highly reliable • Complete two-door access control system – networkable up to 512 doors • Up to 5,000 users/20,000 inactive users • Included power supply can power the control panel, readers and door strikes • 1 year free technical support, 2 year limited warranty • Easy-to-use software included free 	<ul style="list-style-type: none"> • Easily mountable & lockable metal enclosure • Connects to the PCs serial port or via a LAN/Ethernet connection • Power supply (included) powers controller, readers and electric door strikes • Onboard LED status lights • Fully labeled terminals

Features of the Sentry Access Control Software:

- Easy-to-use and learn interface
- Auto-configuration makes connecting software to access control panels simple
- Common features such as the ability to set access groups and time zones makes setting up and restricting access quick and easy
- The status map allows you to import a floor plan to provide a visual representation of your access control system that can be used to monitor the status of connected doors
- The easy-to-use reporting feature makes setting up and editing access reports very simple
- Easily configure individual door settings such as standard door open time, extended door open time and input/output triggers associated with that door
- Passback is a method for bypassing access control systems. For example: One person uses a key or keycard to enter a building, then passes the device back to another person who also uses it to gain entry. Our software features "Anti-passback" that's designed to prevent this tactic
- Identify users faster and easier by assigning profile pictures, email addresses, telephone numbers, job titles, and more

For more information on any of our products or services please visit us on the Web at: www.cctvsentry.com